



Photocells/
Photocell with width 27mm

MICRO-P27

NEW



Once again Abexo has given an answer to the demand of customers and installers, innovating the industry of gates' photocells. Indeed, having noticed the tendency to reduce the size of the pillars, Abexo has created a small photocell, easily adaptable to the limited space of the accessories. Besides the functionality, the aesthetic factor matters as well. The new photocells are almost "invisible" to the eye and well camouflaged.

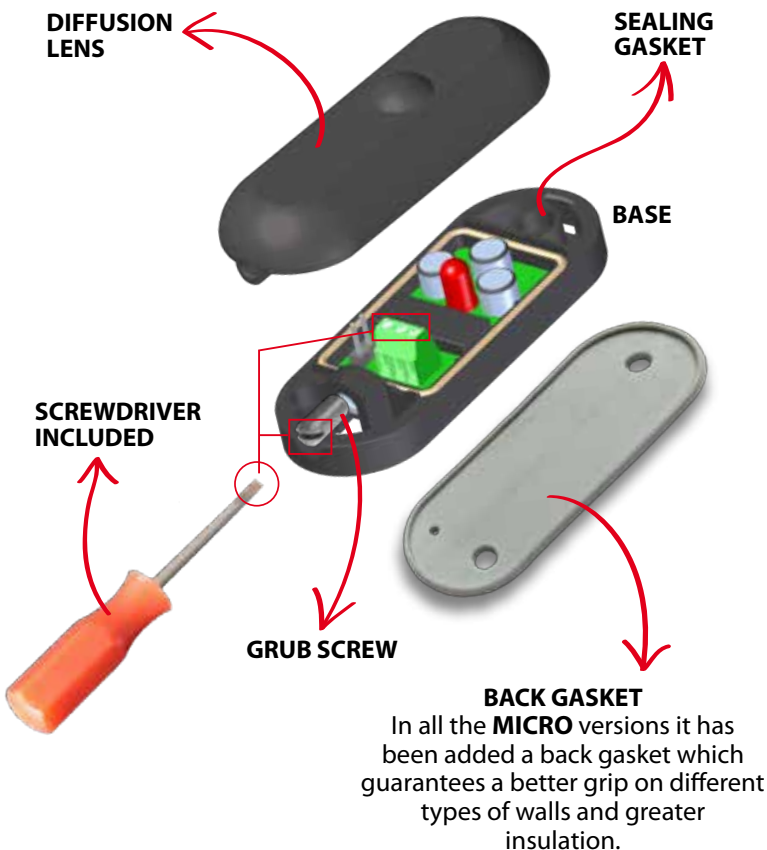
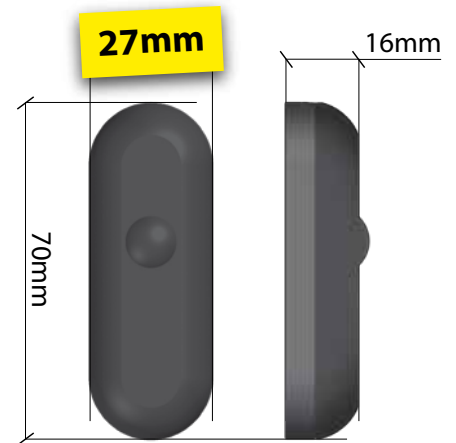
The design was thought taking inspiration from the one of the Micro-Flash e Micro-Traffic, miniaturized and equipped with terminals. To maintain compact dimensions and guarantee maximum performance, an innovative choice was made: using a relay (miniaturized as well) with **REED technology**.

In the Reed relay the classic electromechanical contacts are replaced by Reed contacts, wrapped in an excitation coil: when it generates the magnetic field, the latter closes the contact, without the intermediation of lever systems.

The absence of lever systems of the relay REED allows:

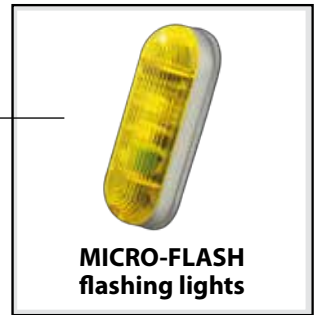
- a greater **miniaturization**
- a long average life span (usually much higher than a million of switchings)
- a greater supply range than traditional relays (REED relays are considered reliable and have a wide range of plants by different producers).

The photocells P27 enclose all the characteristics above.

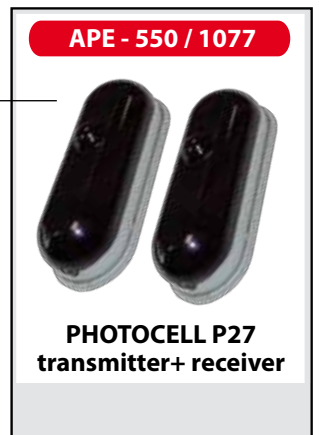




This photo was kindly granted by Ballan SPA



Matching designs



MICRO-P27 allows to select, through a jumper: output 8k2 (SW1=open) or short (SW1=closed), (default).



TECHNICAL DATA

Power supply: 12/24 Vcc/ca
Absorption: 60 mA
Relè: REED TECHNOLOGY
Max length of the door: 10 m
Relay contacts: 0,5 A - 24 V
Oscillation frequency: 1500 Hz
Light type: modulated infra-red
Operating Temperature: : -20°C, +60°C
Weight plastic: 12gr

