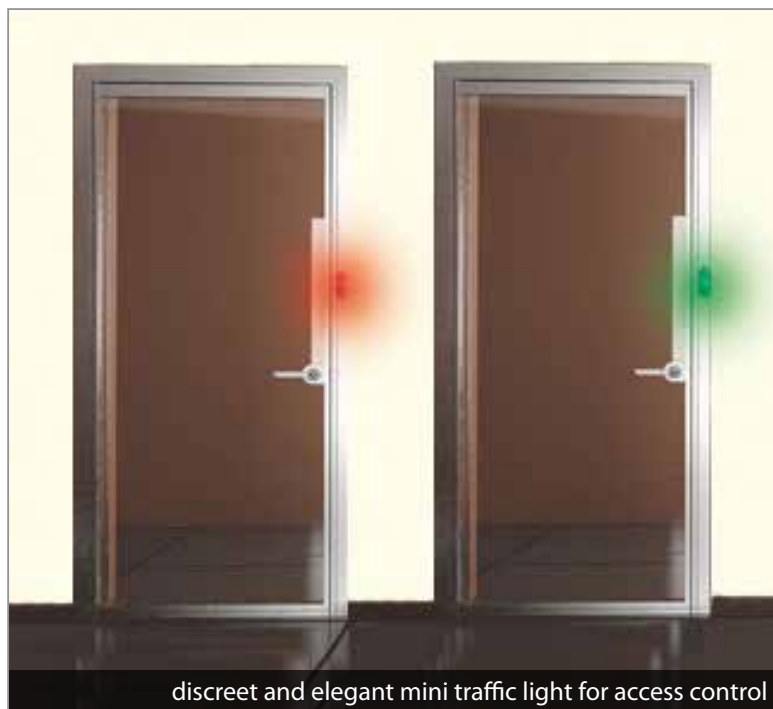
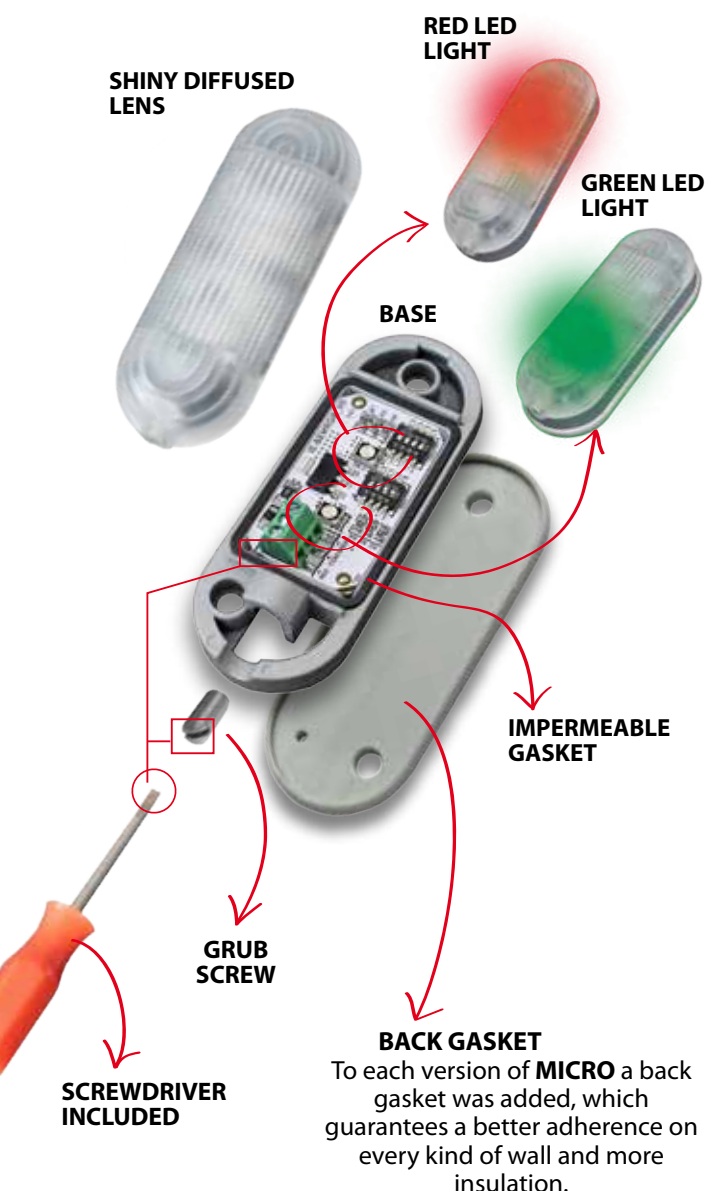


MICRO-TRAFFIC is a LED TRAFFIC LIGHT ideal for signalling the state of an alarm system or of a door in an access control system. Thanks to its compact size, it can be easily dissimulated and can be applied either on the wall or in the door jambs without affecting (ruin, dirty, etc.) the aesthetics of the access points. The steel/glass colours of the materials used match both the traditional doors and door frames in aluminium (or other material).



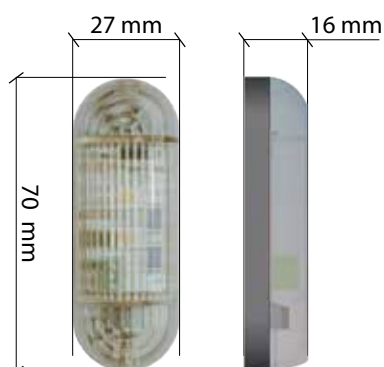
APE - 550 / 1045

MICRO-TRAFFIC

APE - 550 / 1045.20



**PACKAGE n°20
MICRO-TRAFFIC
with counter box**



TECHNICAL SPECIFICATIONS

MICRO-TRAFFIC presence of a three-pole terminal, one pole is shared, the other two are used for the independent connection of the green and red lights.

Power supply	RED		GREEN	
	MAX absorption (mA)	Brightness (lm)	MAX absorption (mA)	Brightness (lm)
24Vac +20% / -10%	55	6	55	6,5
24Vdc +/-20%	35	6	35	6,5
12Vdc +10% / -5%	25	6	20	6,5