

Infrared Touchless Switch (J-Wave)

User Manual

HOTRON
INSPIRING CONFIDENCE



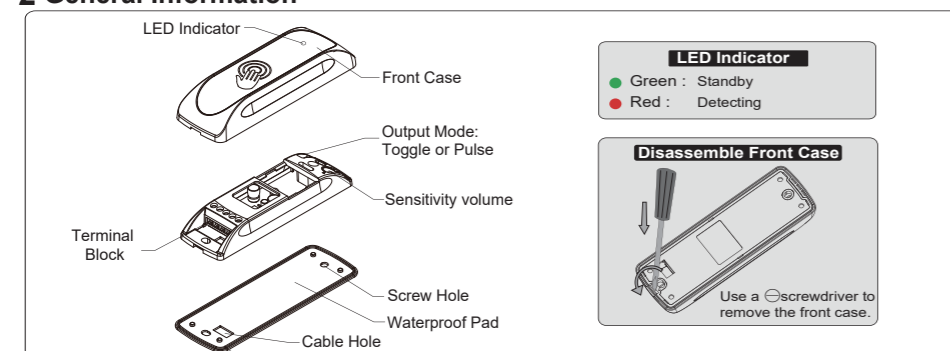
The J-Wave is a highly sensitive, high performance switch designed to activate automatic doors by detecting the movement of a person or object. For the safe and accurate use of this product, please read this instruction manual carefully.



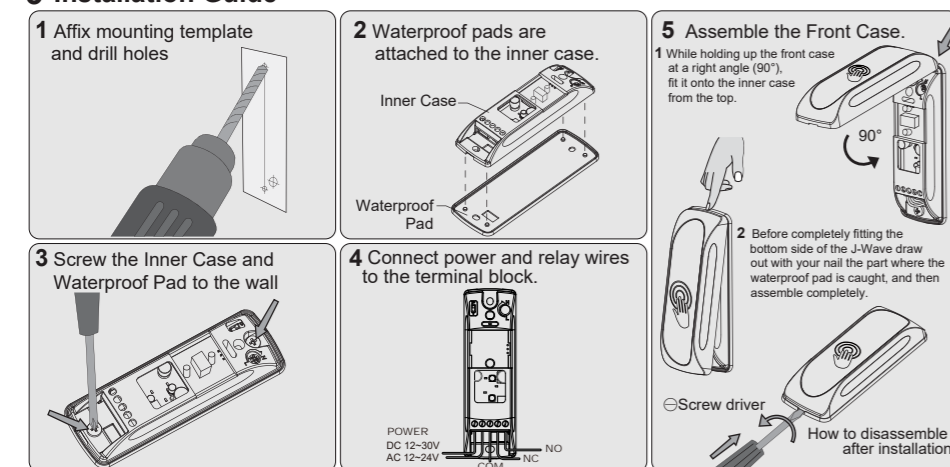
1 Technical specifications

Composition	Proximity Sensor Switch	1EA
	Cable	1EA
	Mounting Template	1EA
	Screw	2EA
	User Manual	1Copy
Specification	Power Supply	DC12~30V, AC12~24V
	Dimensions	40mm x 117mm x 19,5mm (W x L x H)
	Technology	Active Infrared
	Detection Range	10~30cm ±3~5cm
	Detection Mode	Motion
	Output	Relay Contact (1A/30VDC)
	Output Hold Time	1~2 Sec. (PULSE mode)
	Current Consumption	< 1,5W
	Operating Temp/Humidity	-20°C~+50°C / 0~90%
	International Protection	IP54

2 General Information

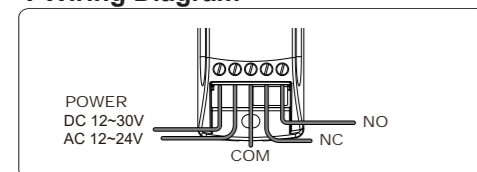


3 Installation Guide

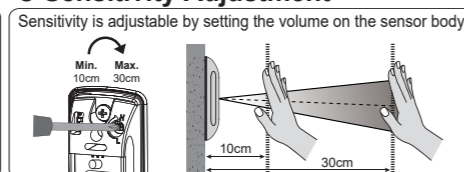


Caution Do not supply power during installation. Do not disassemble or modify the device, it may cause fire or electric shock

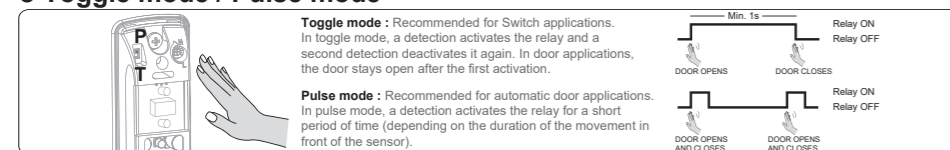
4 Wiring Diagram



5 Sensitivity Adjustment



6 Toggle mode / Pulse mode



7 Mounting Information

- Avoid its exposure to direct sunlight
- Avoid objects in front of the sensor



Interrupteur infrarouge sans contact (J-Wave)

Guide d'utilisation

HOTRON
INSPIRING CONFIDENCE



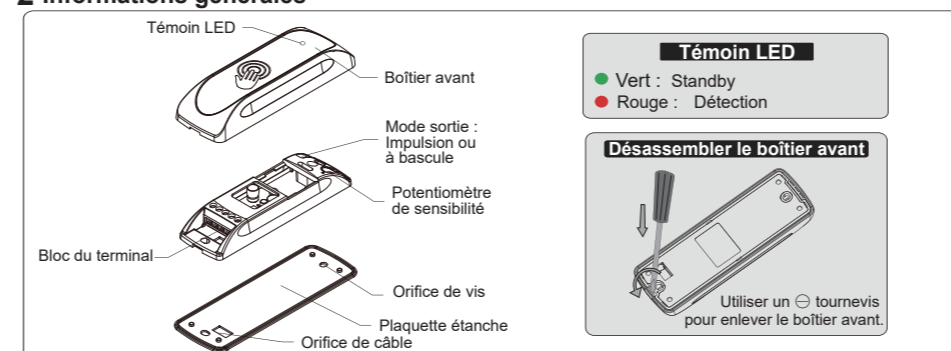
L'interrupteur J-Wave est un modèle hautement sensible et très performant, conçu pour activer les portes automatiques après avoir détecté le mouvement d'une personne ou d'un objet. Pour une utilisation précise en toute sécurité de ce produit, veuillez lire attentivement le présent mode d'emploi.



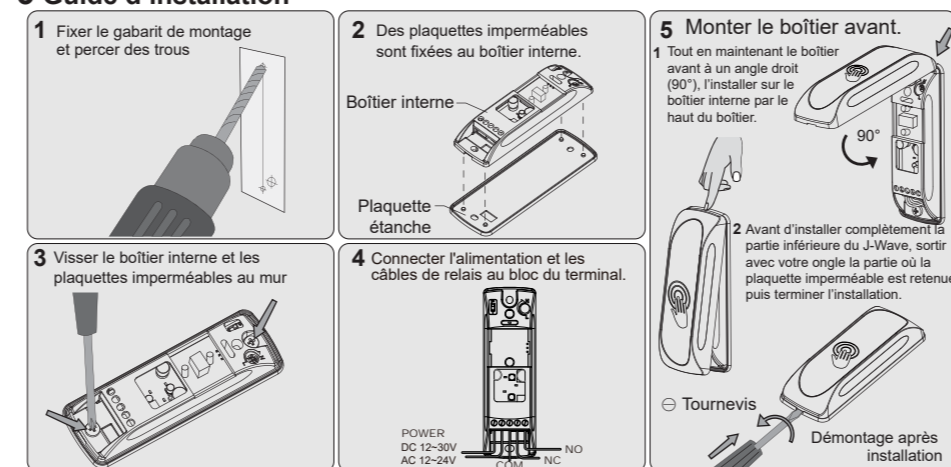
1 Spécifications techniques

Composition	Interrupteur de détecteur de proximité	1
	Câble	1
	Gabarit de fixation	1
	Vis	2
	Guide d'utilisation	1 copie
Spécifications	Alimentation électrique	CC12~30V, CA12~24V
	Dimensions	40 mm x 117 mm x 19,5 mm (Longueur x Largeur x Hauteur)
	Technologie	Infrarouges actifs
	Zone de détection	10~30 cm ±3~5 cm
	Méthode de détection	Déplacement
	Sortie	Contact relais (1A/30V CC)
	Délai d'attente de sortie	1~2 s (mode IMPULSION)
	Consommation électrique	< 1,5 W
	Température / Humidité	-20°C~+50°C / 0~90 %
	Protection internationale	IP54

2 Informations générales

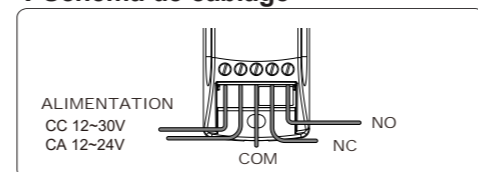


3 Guide d'installation

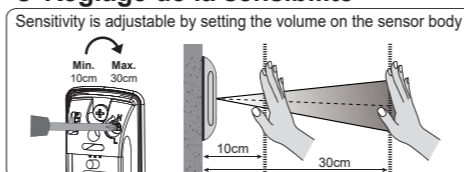


Avertissement Couper l'alimentation électrique pendant l'installation. Ne pas démonter ni modifier le dispositif, cela pourrait provoquer un incendie ou un choc électrique.

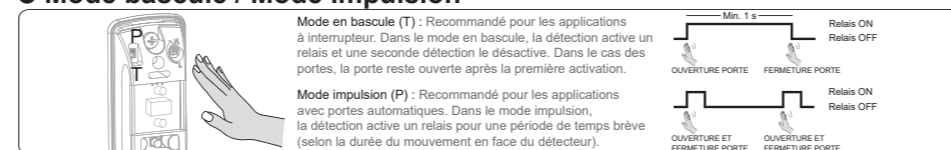
4 Schéma de câblage



5 Réglage de la sensibilité

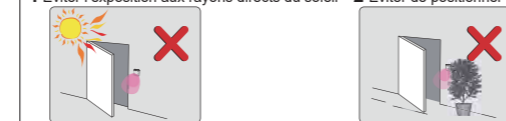


6 Mode bascule / Mode impulsion



7 Informations de montage

- Éviter l'exposition aux rayons directs du soleil
- Éviter de positionner des objets devant le détecteur



Berührungsfreier Infrarotschalter (J-Wave)

Benutzerhandbuch

HOTRON
INSPIRING CONFIDENCE



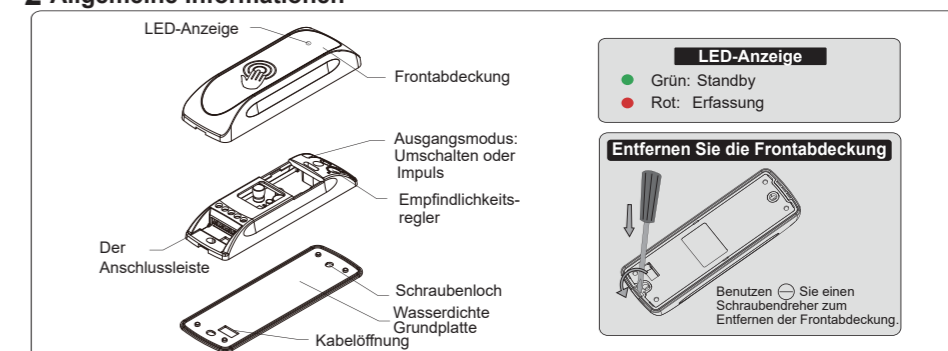
Der J-Wave ist ein besonders empfindlicher Hochleistungsschalter zur Aktivierung automatischer Türen durch die Erkennung von Bewegungen einer Person oder eines Objekts. Für einen sicheren und korrekten Betrieb des Sensors lesen Sie bitte die Anleitung sorgfältig durch.



1 Technische Daten

Zusammensetzung	Näherungs-Sensorschalter	jeweils 1
	Kabel	jeweils 1
	Montageschablone	jeweils 1
	Schraube	jeweils 2
	Benutzerhandbuch	1 Exemplar
Technische Daten	Stromversorgung	DC 12~30 V; AC 12~24 V
	Maße	40 mm x 117 mm x 19,5 mm (B x L x H)
	Technologie	Aktive Infrarottechnik
	Erfassungsbereich	10 ~ 30 cm ±3 ~ 5 cm
	Erfassungsmodus	Bewegung
	Ausgang	Relaiskontakt (1 A/30 V DC)
	Ausgangshaltezeit	1 ~ 2 s (Impulsmodus)
	Stromverbrauch	< 1,5 W
	Temp./Feuchtigk. bei Betrieb	-20°C~+50°C/ 0~90 %
	Internationale Schutzart	IP54

2 Allgemeine Informationen

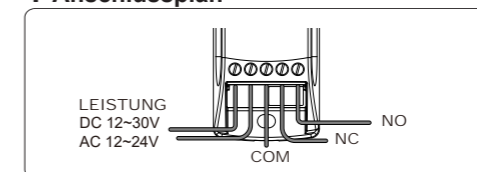


3 Installationsanleitung



Achtung Während der Montage darf kein Strom anliegen. Das Gerät darf nicht auseinandergebaut oder verändert werden; dies kann zu einem Brand oder Stromschlag führen.

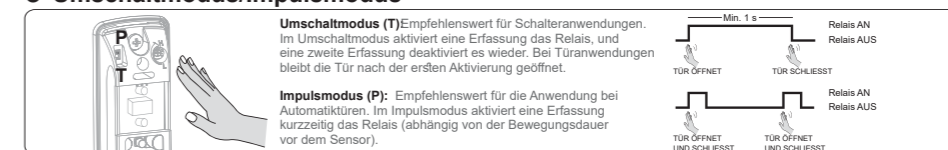
4 Anschlussplan



5 Empfindlichkeitseinstellung



6 Umschaltmodus/Impulsmodus



7 Informationen zur Montage

- Setzen Sie den Sensor nicht direkter Sonneneinstrahlung aus
- Vermeiden Sie Objekte vor dem Sensor



Interruptor de infrarrojos sin contacto (J-Wave)

Manual del usuario



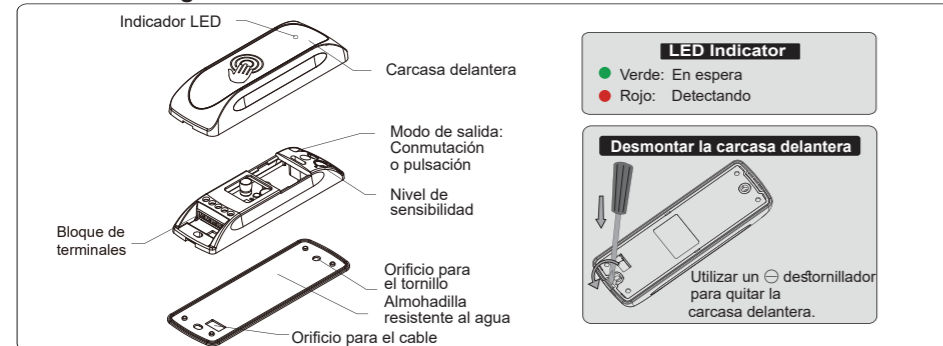
El J-Wave es un interruptor muy sensible de altas prestaciones para activar puertas automáticas detectando el movimiento de una persona o un objeto. Para un uso seguro y preciso del producto, lea cuidadosamente este manual de instrucciones.



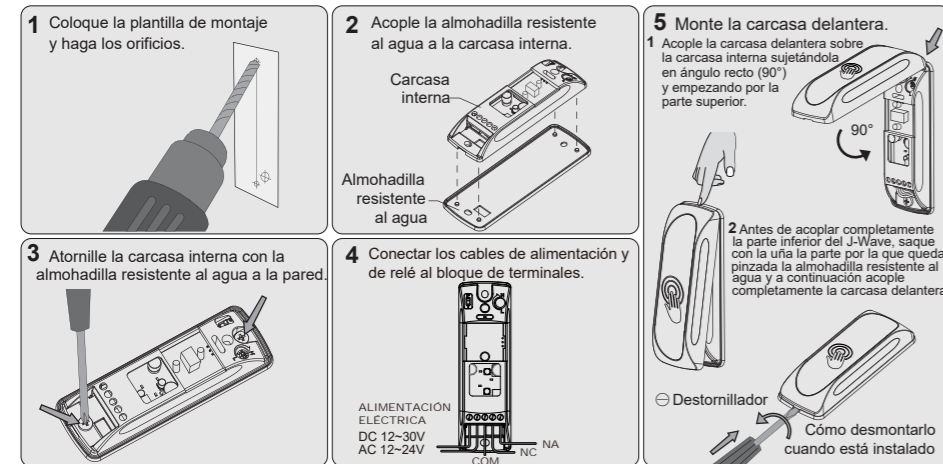
1 Especificaciones técnicas

Componentes		
Interruptor con sensor de proximidad		1 unidad
Cable		1 unidad
Plantilla de montaje		1 unidad
Tornillo		2 unidades
Manual del usuario		1 copia
Especificaciones técnicas		
Alimentación		12-30 V CC, 12-24 V CA
Dimensiones		40 mm x 117 mm x 19,5 mm
Tecnología		Infrarrojo activo
Intervalo de detección		10-30 cm ±3-5 cm
Modo de detección		Movimiento
Salida		Contacto del relé (1 A / 30 V CC)
Tiempo de retención de salida		1-2 s (modo de PULSACION)
Consumo de corriente		< 1,5 W
Temp. / Humedad de funcionamiento		-20 °C~+50 °C / 0-90 %
Grado de protección		IP54

2 Información general

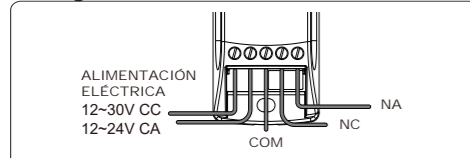


3 Guía de instalación

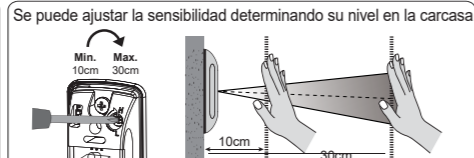


Precaución Desconecte el suministro eléctrico durante la instalación. No desmonte ni modifique el dispositivo, ya que podría incendiarse o causar descargas eléctricas.

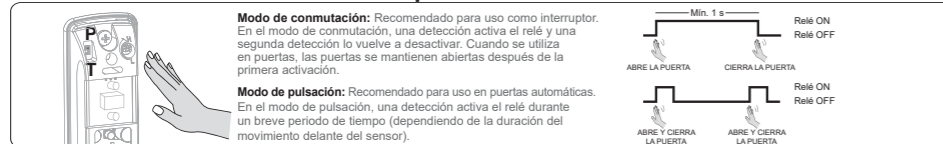
4 Diagrama del cableado



5 Ajuste de la sensibilidad



6 Modo de conmutación / Modo de pulsación



7 Información de montaje

- Evite que quede expuesto a la luz solar directa.
- No coloque objetos delante del sensor.



Interruttore touchless a infrarossi (J-Wave)

Manuale utente



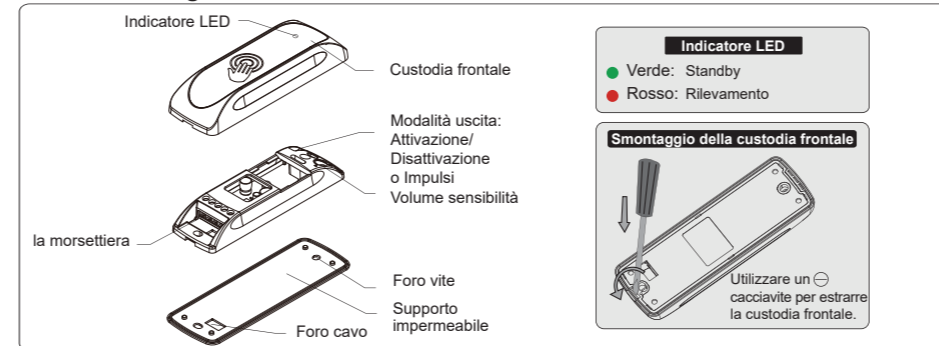
J-Wave è un interruttore estremamente sensibile, ad alte prestazioni, progettato per l'attivazione di porte automatiche attraverso il rilevamento del movimento di persone od oggetti. Per un uso sicuro e corretto di questo prodotto, si prega di leggere attentamente il presente manuale di istruzioni.



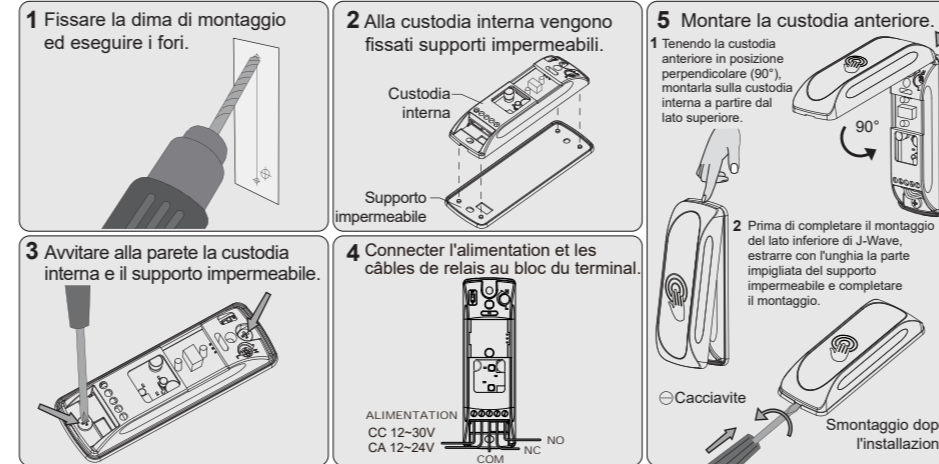
1 Specifiche tecniche

Composizione		
Sensore di prossimità		1
Cavo		1
Dima di montaggio		1
Vite		2
Manuale utente		1 Copia
Specifiche		
Alimentazione elettrica		12-30 V CC/12-24 V CA
Dimensioni		40 mm x 117 mm x 19,5 mm (larg. x lung. x alt.)
Tecnologie		infrarossi attivi
Campo di rilevamento		10-30 cm ±3-5 cm
Modalità di rilevamento		Movimento
Uscita		Contacto relè (1 A/30 V CC)
Tempo di mantenimento dell'uscita		1-2 s. (modalità IMPULSI)
Assorbimento di corrente		< 1,5 W
Temperatura/umidità di esercizio		-20°C~+50°C / 0-90 %
Protezione internazionale		IP54

2 Informazioni generali

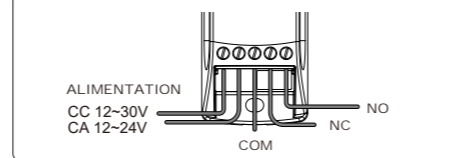


3 Guida all'installazione

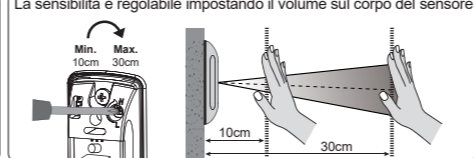


Attenzione Non collegare all'alimentazione elettrica durante l'installazione. Non disassemblare o modificare il dispositivo, perché ciò potrebbe incendiare o scariche elettriche.

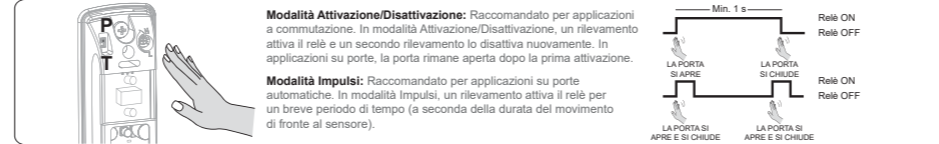
4 Schéma de câblage



5 Regolazione della sensibilità



6 Modalità Attivazione/Disattivazione/Modalità Impulsi



7 Informazioni di montaggio

- Evitare l'esposizione alla luce diretta del sole
- Non posizionare oggetti davanti al sensore

