



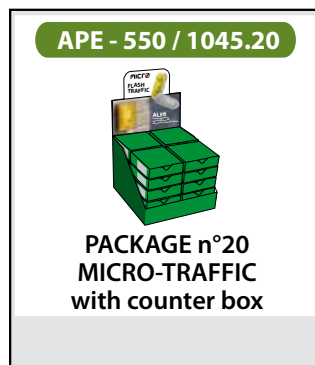
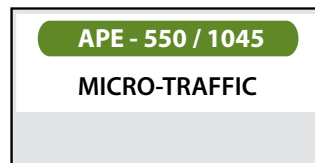
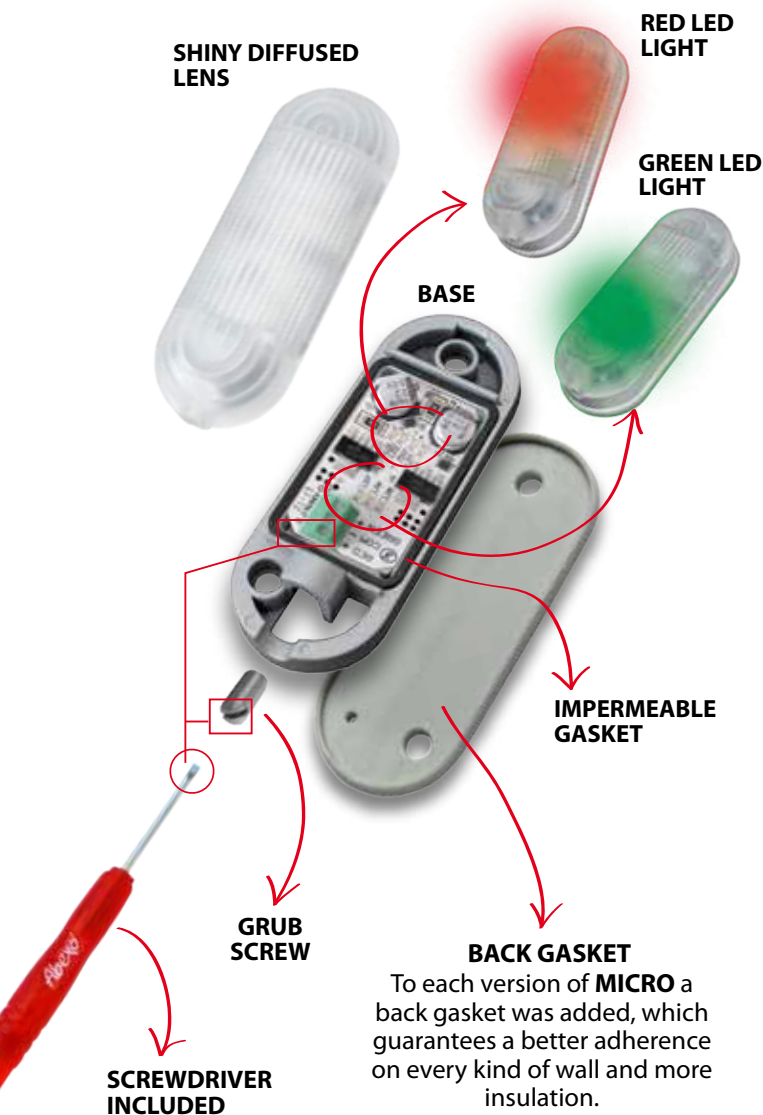
Led flashing lights/
Led traffic light for pedestrian access points



MICRO-TRAFFIC



MICRO-TRAFFIC is a led TRAFFIC LIGHT ideal for signaling the status of an alarm system or of a door in an access control system. Thanks to its compact size, it can be easily dissimulated and can be applied either on the wall or in the door jambs without affecting (ruin, dirty, etc.) the aesthetics of the access points. The steel/glass colours of the materials used match both the traditional doors and door frames in aluminium (or other material).



TECHNICAL DATA

MICRO-TRAFFIC presence of a three-pole terminal, one pole is shared, the other two are used for the independent connection of the green and red lights.

Power supply	RED		GREEN	
	MAX absorption (mA)	Brightness (lm)	MAX absorption (mA)	Brightness (lm)
24Vac +20% / -10%	55	6	55	6,5
24Vdc +/-20%	35	6	35	6,5
12Vdc +10% / -5%	25	6	20	6,5

Operating temperature: -20°C, +60°C