

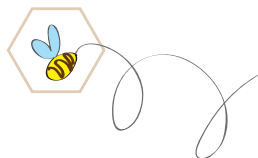


USER MANUAL

EGO-KODE

APE-550/1177

**Universal multi-frequency radio keypad
with 4 channels (433.92MHz to 868.35MHz)
in order to store 4 different automations**



TECHNICAL SPECIFICATIONS



User capacity: 4 channels

Input Mode: PIN Code

PIN code length: 1 to 8 digits

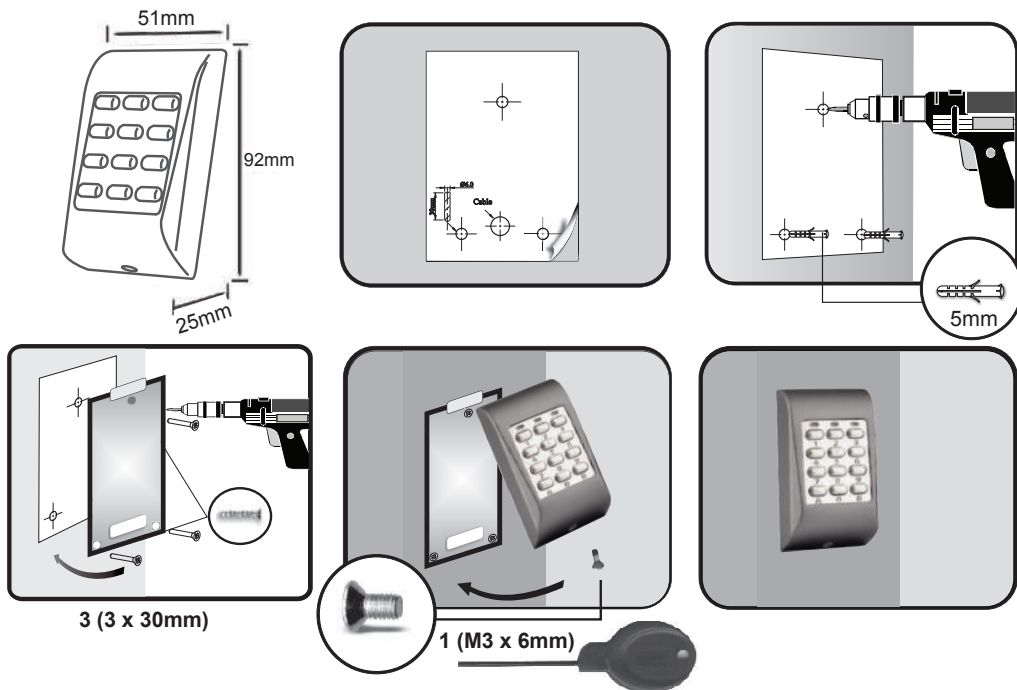
Power supply: 12-24 VAC/DC; max. 100 mA / supplied battery 3V

Tampering: Yes

protection degrees: IP65

Operating temperature: -20 °C to +50 °C, non-condensing

MECHANICAL INSTALLATION



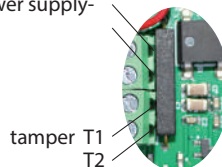
ELECTRICAL INSTALLATION

Via terminal block or with 3V CR 15H270 battery (battery life depends on the number of transmissions, in stand-by with no. 2 transmissions per day, the service life is approx. 3 years)

terminal block



power supply-



Low battery signal:

- low battery warning = the yellow led flashes during insertion of the user code
- low battery warning = the red led flashes when any key is pressed

Keyboard Programming Instructions

General programming information

For all keyboard menus:

- > key "A" confirms the operation effected.
- > key "B" allows you to enter the programming mode.

Once the Master Code is entered and key "B" is pressed, if no operation is effected for about 5 seconds, the red led turns on and the keypad exits the programming phase.

MASTER CODE

Each keyboard comes with a predefined Master Code, "000," which is the same for all keyboards: it is therefore recommended to modify it to make it specific for the place where the keyboard is installed.

To begin programming the keyboard, it is advisable to assign a new Master Code.

This code will be needed to effect each operation through the programming menus.

If this is the first time you are using the keypad or have never assigned a new Master Code you should use the code "000", the entry code when using the keypad for the first time. To change it, follow the procedure given in "(0).

Assigning new MASTER CODE:"

- > WARNING: The Master Code is modifiable only once. It is therefore recommended to note it down in a safe place and not to lose it. For further modification it will be necessary to reset the Master Code and then proceed to assigning the new Master Code (it cannot be overwritten).
- > WARNIN: You can reset the Master Code by following the dedicated procedure (see below). Resetting this code takes to the elimination of the radio codes of the remote controls stored on the keypad, while the User Codes remain in memory

(0) Assignment of a new MASTER CODE

WARNING: The master code can be changed once and must consist of 1 to 8 digits.

- a) Enter the original master code: "000" (entry code when first using the keypad).
- b) Confirm the master code with key "B". If the master code is incorrect, red led will light up for 5 seconds and automatically exit the programming menu.
- c) Enter "0" to enter the "Assign new MASTER CODE" menu.
- d) Enter "0" for entering memory position of the Master Code
- e) Enter the new MASTER CODE, ex. "1234"

The chosen MASTER CODE must consist of 1 to 8 digits and is changeable once only. For further modifications it will be necessary to reset the Master Code and then proceed to assign the new Master Code (it is not overwriteable).

- f) Press "A" to confirm the operation and validate the entered code.

If the operation was successful and the change is correctly made, the green LED will light up
If the operation was unsuccessful, the red led turns on, and the operation must be repeated.

New master code assignment summary: 000 + B + 0 + 0 + 1234 + A

Master Code Reset

Resetting the Master Code results in the deletion of the remote control radio codes stored on the keypad, while User Codes remain in memory.

After this operation is completed, the Master Code will return to the predefined settings, "000".

To effect the reset:

- (a) Remove the battery or disconnect the power supply.
- b) Press and hold down "5"
- c) While holding down "5", plug the battery back in/reconnect power to the keypad: all 3 LEDs (red, green, yellow) light up.
- d) Continue to hold down "5" until only the yellow led remains lit.
- e) Release the "5" key and wait for the yellow led to turn off and the green led to turn on, signaling the successful reset of the Master Code.

To change the Master Code after reset, see item "(0) Assign new MASTER CODE".

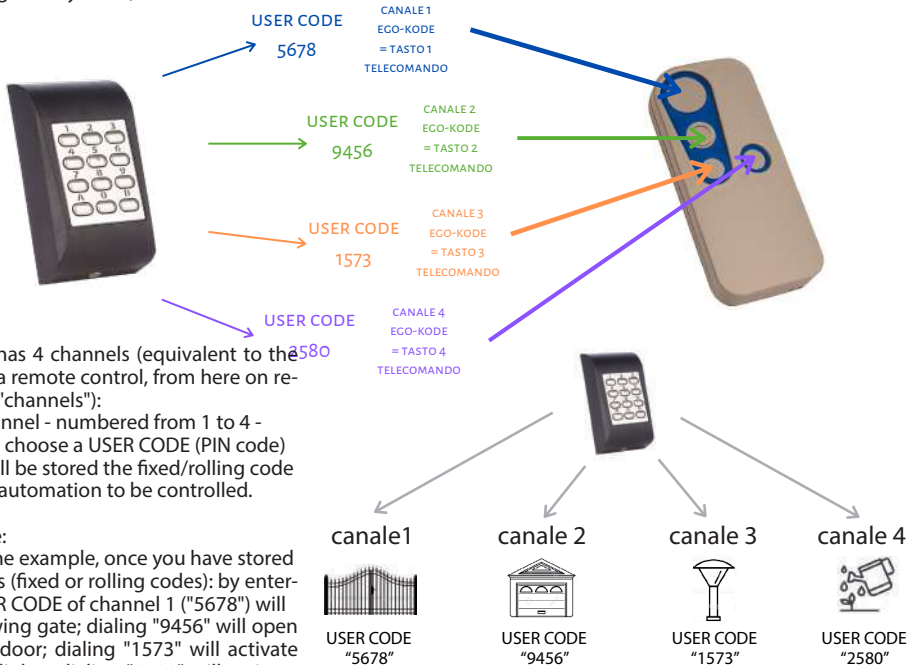
USER CODE

The keypad simulates a 4-button remote control: you can control 4 automations of different types and brands by entering a specifically chosen PIN code (from here on referred to as "USER CODE"), instead of by pushing a button as usually done with remote controls.

A USER CODE, thus associated with a keypad channel, is equivalent to a key of a remote control.

With EGO-KODE it is possible to control automations such as: gates, overhead doors, industrial gates, lighting systems or irrigation systems, etc.

Example



EGO-KODE has 4 channels (equivalent to the buttons on a remote control, from here on referred to as "channels"): for each channel - numbered from 1 to 4 - the user will choose a USER CODE (PIN code) on which will be stored the fixed/rolling code code of the automation to be controlled.

For example:

Following the example, once you have stored automations (fixed or rolling codes): by entering the USER CODE of channel 1 ("5678") will open the swing gate; dialing "9456" will open the garage door; dialing "1573" will activate the garden lights; dialing "2580" will activate irrigation.

it is necessary to assign a USER CODE to each channel. The following is an example of programming of channel 1 (= key 1 of the remote control in the example). To assign codes to the other channels, perform/repeat the procedure by changing the channel (point "d" in the following procedure).

(0) Enter new USER CODE

(a) Enter the chosen MASTER CODE (as per our example "1234").

If the master code has never been changed enter "000" and see point "(0) Assign new MASTER CODE".

b) Confirm with the "B" key. If the Master Code is not correct, it will light up a red led for 5 seconds and exit the programming menu automatically.

c) Enter "0" to enter the "Enter new User Code" menu.

d) Dial "1" to enter the new User Code in memory location 1

An example is taken of entering the user code to be stored on channel 1. To enter the code on the other channels perform/repeat the procedure by changing the channel (1-4).

(e) Enter the new USER CODE, ex. "5678" *The USER CODE must consist of 1 to 8 digits*

f) Press **A** to confirm the operation and validate the code entered

If the operation was successful and the change was correctly made, the green led will light up.

If the operation was unsuccessful, the red led turns on, and it is necessary to repeat the operation.

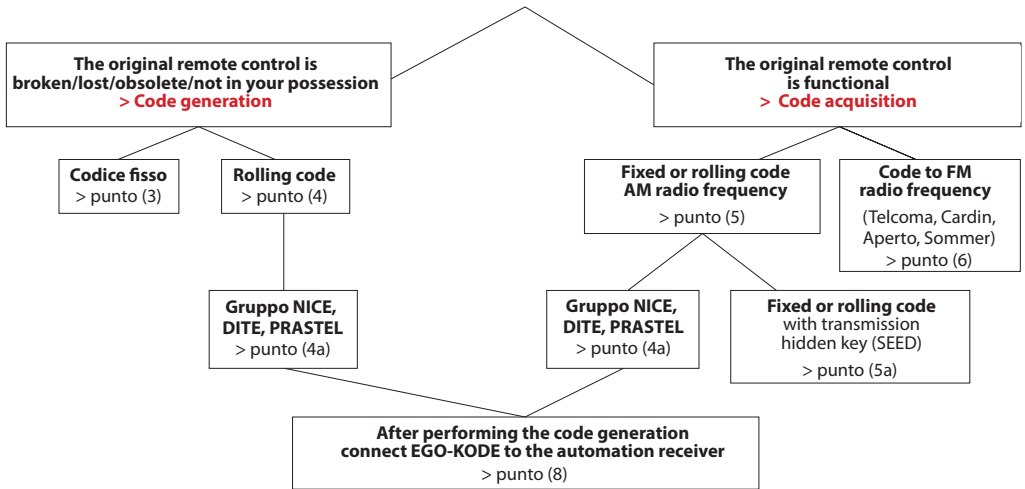
New user code assignment summary: 1234 + B + 0 + 1 + 5678 + A

**WARNING: for deletion of all USER CODES,
see points 1 and 2 on the last pages of the manual.**

Association of the USER CODE with the automation to be controlled

The keypad allows both generation (item 3 and 4) and acquisition of fixed/rolling codes (item "(5) Acquisition of a fixed or rolling code" and item "(6) Acquisition of an FM broadcast code"). First, identify and follow the correct procedure you will need to identify the brand of the remote control/receiver (to identify whether it is fixed/rolling code) by helping with the table in "Manual B".

Association of the USER CODE with the automatic Identify brand of the remote control > see



Choose code generation if the original remote control is broken, lost, obsolete, you no longer have it

- For fixed codes, see step (3).
- For rolling codes, see step(4).

If the original remote control belongs to the NICE, DITEC, PRASTEL group (always, even if they are in possession of the original working remote control). For this group of remote controls, it is always necessary to generate the code

to make EGO-KODE learn it, and then store it in the original receiver and make the keypad communicate EGO-KODE (which replaces the remote control) and receiver.

Choose code acquisition if you have the original remote control and the latter is working.

- For fixed codes, see step (3)
- For rolling codes, see step (4)

WARNING: If the remote control belongs to the NICE, DITEC, PRASTEL group-even if you are in possession of it and it is working - it is necessary to follow the procedure given in step (4a), in the section on generating codes. For this group of remote controls, it is always necessary to generate the code to have it learned by EGO-KODE, and then store it in the original receiver and make the EGO-KODE keypad (which replaces the remote control) and the automation receiver.

CODE GENERATION

If you do not have the original remote control to operate the automation (it is broken, obsolete, lost, etc...) or the remote control belongs to the NICE, DITEC and PRASTEL group, you need to generate the fixed/rolling code.

To generate codes, there are two different procedures depending on the type of code:

To generate a fixed code, see procedure given on step (3).

To generate a rolling code, see procedure given on step(4).

If the remote control belongs to the NICE, DITEC, PRASTEL group, see procedure given on step (4a).

(3) Fixed code generation

a) Enter the chosen MASTER CODE, as per our ex. **"1234"**

If the master code has never been changed enter "000" and see point **"(0) Assign new MASTER CODE"**.

b) Confirm with the **"B"** key.

If the Master Code is not correct, it will light up red led for 5 seconds and exit the programming menu automatically.

c) Enter **"3"** to enter the "Generation of a fixed code" menu.

d) Enter two digits from **"01"** to **"06"** to select the fixed code to be generated from the list of fixed codes that can be generated

(see end of step **"(3) List of generatable fixed codes"**).

(e) Type **"1"** to select the channel on which to generate the fixed code.

The generation of the code to be stored on channel 1 is taken as an example. To generate the codes on the other channels

repeat the procedure by changing the channel (1-4).

f) Press **A** to confirm the operation.

The yellow LED will light up: in processing.

If the operation was successful and the modification is correctly done, the green led will light.

If the operation was unsuccessful, the red led will light, and the operation must be repeated.

User code deletion summary: 1234 + B + 3 + 01 + 1 + A

List of fixed codes that can be generated

"01" : HT12 a 433Mhz	"04" : HT21 a 868Mhz
"02" : HT12 a 868Mhz	"05" : Trinary a 433Mhz
"03" : HT21 a 433Mhz	"06" : Trinary a 868Mhz

HT12 = fixed code generated by radio controls with 12 dip-switches
HT21 = fixed code generated by radio controls with 21 dip-switches

(4) Rolling code generation

WARNING: if the rolling code remote control belongs to NICE, DITEC, PRASTEL group follow procedure step (4a)

a) Enter the chosen MASTER CODE, as per our ex. **"1234"**

If the master code has never been changed enter "000" and see point **"(0) Assign new MASTER CODE"**.

b) Confirm with the **"B"** key.

If the Master Code is not correct, it will lit red led for 5 seconds and exit the programming menu automatically.

c) Enter **"4"** to enter the "Generating a rolling code if you do not have the remote control" menu.

d) Enter two digits from **"01"** to **"44"** to select the rolling code to be generated from the list of rolling codes that can be generated (see end of step (4a), list of rolling codes that can be generated).

Except codes: "02, 30 (Nice)," "33/21 (Prastel)," "35/20 (Ditec). In these cases, follow procedure step (4a).

(e) Enter **"1"** to select the channel on which to generate the rolling code.

The generation of the code to be stored on channel 1 is taken as an example. To generate the codes on the other channels

repeat the procedure by changing the channel (1-4).

f) Press **A** to confirm the operation.

The yellow LED will light up: in processing.

If the operation was successful and the modification is correctly done, the green led will light.

If the operation was unsuccessful, the red led will light, and the operation must be repeated.

Summary rolling code generation if you do not have the remote control: 1234 + B + 4 + 01 + 1 + A

(4a) Generating a rolling code from the NICE, DITEC, PRASTEL group.

WARNING: Follow this procedure even if you have the remote control and it is working.

For this group of remote controls it is always necessary to generate the code to have it learned by EGO-KODE, and then store it in the original receiver and make the EGO-KODE keypad (which replaces the remote control) and the automation receiver.

a) Enter the chosen MASTER CODE, as per our example "1234".

If the master code has never been changed enter "000" and see point "(0) Assign new MASTER CODE".

b) Confirm with the "B" key.

If the Master Code is not correct, it will lit red led for 5 seconds and exit the programming menu automatically.

c) Dial "4" to enter the menu "Generating a rolling code if you do not have the remote control"

d) Dial "02, 30 (Nice)", "33/21 (Prastel)", "35/20 (Ditec)" to select the rolling code to be generated according to the list of generatable rolling codes ([see fine point \(4\), list of generatable rolling codes](#)).

For other rolling codes follow procedure step (4).

(e) Enter "1" to select the channel on which to generate the rolling code.

The generation of the code to be stored on channel 1 is taken as an example. To generate codes on the other channels repeat the procedure by changing the channel (1-4).

f) Press "A" to confirm the operation.

The yellow LED will light up: in processing.

If the operation was successful and the modification is correctly done, the green led will light.

If the operation was unsuccessful, the red led will light, and the procedure must be repeated.

Depending on the group which the remote control belongs, follow the specific procedure for storing the receiver:

ROLLING CODE NICE GROUP

BRAND	MODEL
NICE	FLO2R, FLO4R, VERY VR, ERA-INTI2, ERA-ONE2, ERA-ONE4
NICE	SMILO

The procedure should be made a few meters from the receiver positioned near the gate/barrier/door, in the shortest possible time.

Approach the gate and:

(a) Enter the USER CODE on the keypad (without pressing A to confirm).

b) Press and hold down the P1 button (or programming button) on the NICE receiver.

c) Press A on the keypad to confirm the previously typed User Code.

d) When the led on the receiver goes out, release the P1 key. The led will flash twice to indicate successful memorization.

If this procedure fails, follow the instructions on the NICE receiver.

ROLLING CODE DITEC GROUP

BRAND	MODEL
DITEC	GOL4, BXLG4, BXP2, BXL2

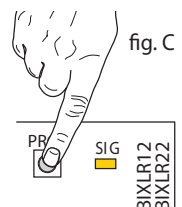
The procedure should be done within a few meters of the receiver positioned near the gate/bar/gate. Approach the gate and:

(a) Press and release the PRG button on the radio receiver: the SIG signaling led will lights up (pic C)

b) Enter the user code related to the channel on which you want to store the remote control and on which

you have generated the rolling code

(c) The SIG sensor led flashes quickly for about 10 sec, then goes out.



ROLLING CODE PRASTEL GROUP

BRAND	MODEL
PRASTEL	TC4E, BFOR, MPSTL1E, MPSTL2E, MPSTL4E, MPSTP2E, MPSTP2

The procedure should be done within a few meters of the receiver positioned near the gate/barrier/door.
Approach the gate and:

- Press the programming button on the receiver.
 - Enter the user code on which you have stored the PRASTEL radio control.
- The keypad makes a transmission and the receiver learns the code.

NOTE: Each time a radio control is entered, the receiver resets the learning time for an additional 10 seconds, to allow the memorization of other radio controls.

If no other remote controls are inserted within the 10-second learning time, the receiver exits the storing process. If the procedure fails, or if mistakes are made during programming, please wait 20 seconds and repeat the operation.

Summary of rolling code generation belonging to the NICE, DITEC or PRASTEL group:

1234 + B + 4 + 01 + 1 + A

- + procedure for storing in the receiver for NICE GROUP
- + procedure for storing in the receiver for DITEC GROUP
- + procedure for storing in the receiver for PRASTEL GROUP

Lista di rolling code generabili:

codice	marca / modello
"01"	BFT
"02"	NICE SMILO (solo mod. SMILO)
"03"	APRIMATIC
"04"	BENINCA'
"05"	DEA
"06"	GIBIDI
"07"	FADINI
"08"	FAAC RC-LC
"09"	SOMMER Chiave-1 434MHz
"10"	SOMMER Chiave-2 434MHz
"11"	SOMMER Chiave-1 868MHz
"12"	SOMMER Chiave-2 868MHz
"13"	MHOUSE
"14"	SEAV 433MHz
"15"	SEAV 868MHz

codice	marca / modello
"16"	ACM
"17"	GENIUS RC
"18"	GENIUS
"19"	CARDIN FM
"20"	DITEC (decodif. alternativa)
"21"	PRASTEL (decodif. alternativa)
"22"	GENIUS BRAVO
"23"	NORMSTAHL
"24"	PUJOL
"25"	V2 433MHz
"26"	V2 868MHz
"27"	O&O 433MHz
"28"	O&O 868MHz
"29"	NOVOFERM
"30"	NICE

codice	marca / modello
"31"	LIFTMASTER 433
"32"	LIFTMASTER 315
"33"	PRASTEL
"34"	KING GATES
"35"	DITEC
"36"	TELCOMA FM
"37"	ERONE 433
"38"	ERONE 868
"39"	JCM 433
"40"	JCM 8689
"41"	SILVELOX
"42"	DOORHAN
"43"	LIFTMASTER 39
"44"	HORMANN ECOST

Lista rolling code gruppo NICE, DITEC, PRASTEL:

ROLLING CODE NICE GROUP

MARCA/BRAND	MODELLO	FOTO
NICE	FLO2R, FLO4R, VERY VR, ERA-INTI2, ERA-ONE2, ERA-ONE4	

ROLLING CODE NICE GROUP

MARCA/BRAND	MODELLO	FOTO
NICE	SMILO	

ROLLING CODE DITEC GROUP

MARCA/BRAND	MODELLO	FOTO
DITEC	GOL4, BXLG4, BXL P2, BXL S2	

ROLLING CODE PRASTEL GROUP

MARCA/BRAND	MODELLO	FOTO
PRASTEL	TC4E, BFOR, MPSTL1E, MPSTL2E, MPSTL4E, MPSTP2E, MPSTP2	

CODE ACQUISITION

If you have the original remote control and it is working, you can proceed to acquire the code. To follow the correct procedure, you must identify the type of code. To do this best, we recommend that you identify the brand of the remote control with the help of the chart in "Manual B".

For code acquisition, the procedure differs depending on the radio frequency:

- To acquire a fixed or rolling code by radio frequency, see step **"(5) Acquiring a fixed or rolling code."** To acquire a fixed or rolling code by radio frequency via hidden key, see step

"(5a) Acquisition of a rolling code with storage by hidden key (SEED)."

- To acquire a fixed or rolling code by FM radio frequency, see procedure given in step **"(6) Acquisition of an FM broadcast code."**

WARNING: If the remote control belongs to the NICE, DITEC, PRASTEL group-even if you have it and the radio control is working-you must follow the procedure indicated in **"(4a) Generating a rolling code of the NICE, DITEC, PRASTEL group,"** in the section on generating codes.

(5) Acquiring a fixed or rolling code.

(a) Enter the chosen MASTER CODE, as per our example **"1234."**

If the master code has never been changed enter "000" and see point **"(0) Assign new MASTER CODE"**.

b) Confirm with the **"B"** key. If the Master Code is not correct, it will lit red led for 5 seconds and exit the programming menu automatically.

c) Enter **"5"** to enter the "Acquiring a fixed or rolling code" menu.

d) Enter **"1"** to select the channel on which to generate the rolling code. The generation of the code to be stored on channel 1 is taken as an example. To generate codes on the other channels repeat the procedure by changing the channel (1-4).

e) Press **"A"** to confirm the operation.

f) The yellow led turns on and stays on.

Transmit the code (fixed or rolling) by radio frequency to be stored until the red led or the green led flashes green from 1 to 3 times where:

i. One blink = acquired a fixed code

ii. Two blinks = acquired a fixed code that could be a rolling code

iii. Three blinks = acquired a rolling code

g) The yellow led turns off and the green led comes on, which remains on, to indicate that the code has been acquired.

[!] If the yellow led goes out and the red led comes on, it means that the operation was not successful.

After performing the procedure indicated above (step 5), to activate the automation enter the User Code on which you have memorized the remote control and press A to confirm.

If the automation does not activate, you must complete the memorization of the code in the receiver.

If the receiver has enabled radio acquisition of new radio controls, use the procedure in step (8) to the automatic acquisition of the rolling code in the receiver. If the receiver has radio acquisition of new radio commands disabled, follow the receiver's instructions.

Fixed or rolling code acquisition summary:

1234 + B + 5 + 1 + A + possible storage of rolling code in the receiver:

- if the receiver has radio acquisition enabled = procedure step 8

- if the receiver has radio acquisition disabled = receiver instructions

(5a) Acquisition of a rolling code with storage by hidden key (SEED).

(a) Enter the chosen MASTER CODE, as per our example **"1234."**

If the master code has never been changed enter "000" and see point **"(0) Assign new MASTER CODE"**.

b) Confirm with the **"B"** key.

If the Master Code is not correct, it will light red led for 5 seconds and exit the programming menu automatically.

c) Enter **"5"** to enter the menu "Acquisition of a fixed or rolling code with storage by key hidden (SEED)"

- (d) Enter "1" to select the channel on which to generate the rolling code.
 The generation of the code to be stored on channel 1 is taken as an example. To generate the codes on the other channels repeat the procedure by changing the channel (1-4).
- e) Press "A" to confirm the operation.
- (f) The yellow LED lights up and stays on.
 Transmit the hidden key of the original radio control until the green led also lights up.
- g) Transmit the key of the original remote control to be stored until the red led or the green led flashes 3 times
- h) The yellow led turns off and the green led turns on, which remains on, to signal that the code has been acquired.
 [!] If the yellow led goes out and the red led comes on, it means that the operation was not successful.

After performing the procedure indicated above (step 5a), to activate the automation, enter the User Code on which you stored the remote control and press A to confirm.
 If the automation does not activate, you must complete the memorization of the code in the receiver.
 If the receiver has enabled radio acquisition of new radio controls, use the procedure in step (8) to the automatic acquisition of the rolling code in the receiver. If the receiver has radio acquisition of new radio commands disabled, follow the receiver's instructions.

WARNING: For FAAC/GENIUS radio codes, after performing the procedure given above in step (5a), to store the faac/genius code in the receiver, you must press User Code + A twice in the time maximum of 4 seconds.

Summary rolling code acquisition with storage by hidden key (SEED):

- 1234 + B + 5 + 1 + A+ possible storage of the rolling code in the receiver:
- if the receiver has radio acquisition enabled = procedure step 8
- if the receiver has radio acquisition disabled = receiver instructions

(6) Acquiring an FM broadcast code (TELCOMA, CARDIN, OPEN, SOMMER).

See FM radio-frequency code list, end of step 6 (*).




- (a) Enter the chosen MASTER CODE, as per our example "1234."
 If the master code has never been changed enter "000" and see point "(0) Assign new MASTER CODE".
- b) Confirm with the "B" key.
 If the Master Code is not correct, it will lit red led for 5 seconds and exit the programming menu automatically.
- c) Enter "6" to enter the menu "Acquiring an FM transmission code (TELCOMA, CARDIN, OPEN, SOMMER)"
- d) Dial "1" to select the channel on which to generate the rolling code.
 The generation of the code to be stored on channel 1 is taken as an example. To generate the codes on the other channels repeat the procedure by changing the channel (1-4).
- e) Press "A" to confirm the operation.
- (f) The yellow led turns on and stays on. Transmit the FM radio-frequency code to be stored until the red led or the green led flashes 1 to 3 times where:
- i. One blink = acquired a fixed code
 - ii. Two blinks = acquired a fixed code that could be a rolling code
 - iii. Three blinks = acquired a rolling code
- g) The yellow led turns off and the green led turns on, which remains on, to indicate that the code has been acquired.
 [!] If the yellow led goes out and the red led comes on, it means that the operation was not successful.

Rolling code acquisition summary:

1234 + B + 6 + 1 + A

***FM transmission code list:**

ROLLING CODE FM

MARCA/BRAND	MODELLO	FOTO
CARDIN	S449QZ, S437TX	
SOMMER/ APERTO FM	4013, 4013TX, 4014, 4020, 4022TX, 4025, 4026	
TELCOMA FM	FM402, FM402E, FM404E	

(7) Transmission of the hidden key (SEED) of a rolling code.

If you generate an original code of a brand that involves the use of the hidden key (SEED) for programming in the receiver, you will need to generate the SEED according to this procedure.

This procedure is combined with the generation of rolling codes involving the use of the hidden key (p. 5a).

a) Enter the chosen MASTER CODE, as per our example, "1234."

If the master code has never been changed enter "000" and see point "(0) Assign new MASTER CODE".

b) Confirm with the "B" key.

If the Master Code is not correct, it will lit red led for 5 seconds and exit the programming menu automatically.

c) Press "7" to enter the "Transmission of the hidden key (SEED) of a rolling code" menu.

d) Press "1" to select the channel from which the hidden key will be generated and transmitted.

The generation of the code to be stored on channel 1 is taken as an example. To generate the codes on the other channels repeat the procedure by changing the channel (1-4).

e) Press "A" to confirm the operation.

f) The yellow led turns on for a few seconds.

The yellow led turns off and the green led turns on for the duration of the transmission (about 5 sec.).

If the operation was successful and the change is correctly made, the green led lights up.

If the operation was unsuccessful, the red led turns on, and the operation must be repeated.

Transmission of the hidden key (SEED) of a rolling code summary: 1234 + B + 7 + 1 + A

8) Procedure for automatically storing the acquired rolling code in the receiver.

Use this procedure for rolling codes acquired by procedure steps (5) and (5a), whose receiver has enabled the radio acquisition of new rolling codes. If the receiver has radio acquisition of new radio commands disabled, follow the receiver's instructions.

a) Enter the chosen MASTER CODE, as per our example, "1234."

If the master code has never been changed enter "000" and see point "(0) Assign new MASTER CODE".

b) Confirm with the "B" key.

If the Master Code is not correct, it will lit red led for 5 seconds and exit the programming menu automatically.

c) Enter "8" to enter the "Automatic procedure of rolling code acquired in the receiver" menu.

d) Dial "1" to select the channel from which the hidden key will be generated and transmitted

The generation of the code to be stored on channel 1 is taken as an example. To generate the codes on the other channels repeat the procedure by changing the channel (1-4).

e) Press "A" to confirm the operation.

f) The yellow led turns on for a few seconds.

The yellow led turns off and the green led turns on for the whole procedure.

If the operation was successful and the change is correctly made, the green led will light up.

If the operation failed, the red led will light, and the operation must be repeated.

If the automatic memorization procedure is not successful, repeat the procedure of memorizing the code following the receiver's instructions.

Summary of automatic acquisition procedure of the rolling code copied into the receiver:

1234 + B + 8 + 1 + A WARNING: first carry out procedure step 5/5a

Brands checklist of receivers that have radio acquisition enabled:

marca / modello
BFT
Nice smilo
Aprimatic
Benincà
Dea

marca / modello
GiBiDi
Fadini
Faac RC-LC
Mhouse
Seav 433M

marca / modello
ACM
Genius RC
Cardin FM
Genius Bravo
Pujol

marca / modello
OeO AbTec
v2
Telcoma FM
JCM
Silvelox

(9) Keyboard backlight and sound setting.

WARNING: keyboard backlighting is only possible with cable power. With power supply from the battery power, keyboard backlighting is disabled even if you set the parameter in step (d) to "1" (backlight on).

- a) Enter the chosen MASTER CODE, as per our example, "1234".
If the master code has never been changed enter "000" and see point "(0) Assign new MASTER CODE".
- b) Confirm with the "B" key.
If the Master Code is not correct, it will lit red led for 5 seconds and automatically exit the menu of programming.
- c) Enter "9" to enter the "Keypad backlight and acoustic sound setting" menu.
- d) Enter "1" to enable the keyboard backlight, or enter "0" to disable the keyboard backlight of the keyboard.
- e) Type "1" to activate the key sound, or type "0" to disable it.
- f) Press "A" to confirm the operation.
- g) The yellow LED flashes.
The green led turns on to indicate successful configuration.
If the operation is unsuccessful, the red led turns on, and the operation must be repeated.

Backlight configuration summary and keypad sound:

- 1234 + B + 9 + 1 + A (Backlight On; Sound On)
- 1234 + B + 9 + 0 + 0 + A (Backlight Off; Sound Off)
- 1234 + B + 9 + 1 + 0 + A (Backlight On; Sound Off)
- 1234 + 9 + 0 + 1 + A (Backlight Off; Sound On)

BATTERY LEVEL ALERTS

Low battery warning: during user code input the yellow led will flash.

Low battery warning: when pressing any key the red led will flash.

User code elimination menu

(1) Deleting USER CODE

This procedure is used to delete the individual USER CODES chosen. To delete all 4 of them, follow step "(2) Deleting all stored USER CODES."

- a) Enter the chosen MASTER CODE (as per our example "1234").
If the master code has never been changed enter "000" and see point "(0) Assign new MASTER CODE".
- b) Confirm with the "B" key.
If the Master Code is not correct, it will lit red led for 5 seconds and exit the programming menu automatically.
- c) Enter "1" to enter the "Delete User Code" menu.
- d) Dial "1" to select the memory location of the User Code to be deleted.
The deletion of the user code from channel 1 is taken as an example. To delete the code from the other channels perform/ repeat the procedure by changing the channel (1-4).
- e) Press "A" to confirm the operation and validate the entered code.
If the operation is successful and the change is correctly made, the green LED will light up.
If the operation was unsuccessful, the red led turns on, and you need to repeat the operation.

User code deletion summary: 1234 + B + 1 + 1 + A

(2) Deleting all stored USER CODE.

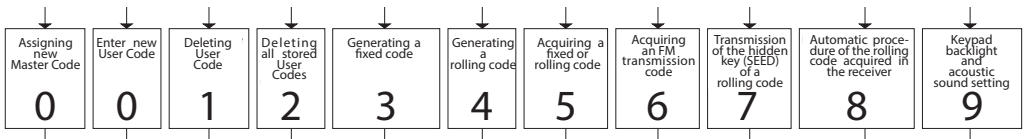
This procedure is used to delete all USER CODE stored on the keypad. To delete individual USER CODE, follow step "(1) Deleting USER CODE".

CAUTION: Deleting all USER CODE will NOT delete radio codes stored on individual channels (to delete radio codes stored on individual channels follow procedure "reset master code" page 3).

- a) Enter the chosen MASTER CODE, as per our example "1234".
If the master code has never been changed enter "000" and see point "(0) Assign new MASTER CODE".
- b) Confirm with the "B" key.
If the Master Code is not correct, it will lit red led for 5 seconds and exit the programming menu automatically.
- c) Press "2" to enter the "Delete all stored user codes" menu.
- d) Press "A" to confirm the operation.
If the operation is successful and the deletion is correctly done, the green LED will light up.
If the operation was unsuccessful, the red led turns on, and the operation needs to be repeated.

Summary deletion of all stored user codes: 1234 + B + 2 + A

Programming menu list "0-9"



- 0 > Assigning new Master Code
- 0 > Enter new User Code
- 1 > Deleting User Code
- 2 > Deleting all stored User Codes
- 3 > Generating a fixed code
- 4 > Generating a rolling code
- 5 > Acquiring a fixed or rolling code
- 6 > Acquiring an FM transmission code (TELCOMA, CARDIN, OPEN, SOMMER)
- 7 > Transmission of the hidden key (SEED) of a rolling code
- 8 > Automatic procedure of the rolling code acquired in the receiver
- 9 > Keypad backlight and acoustic sound setting

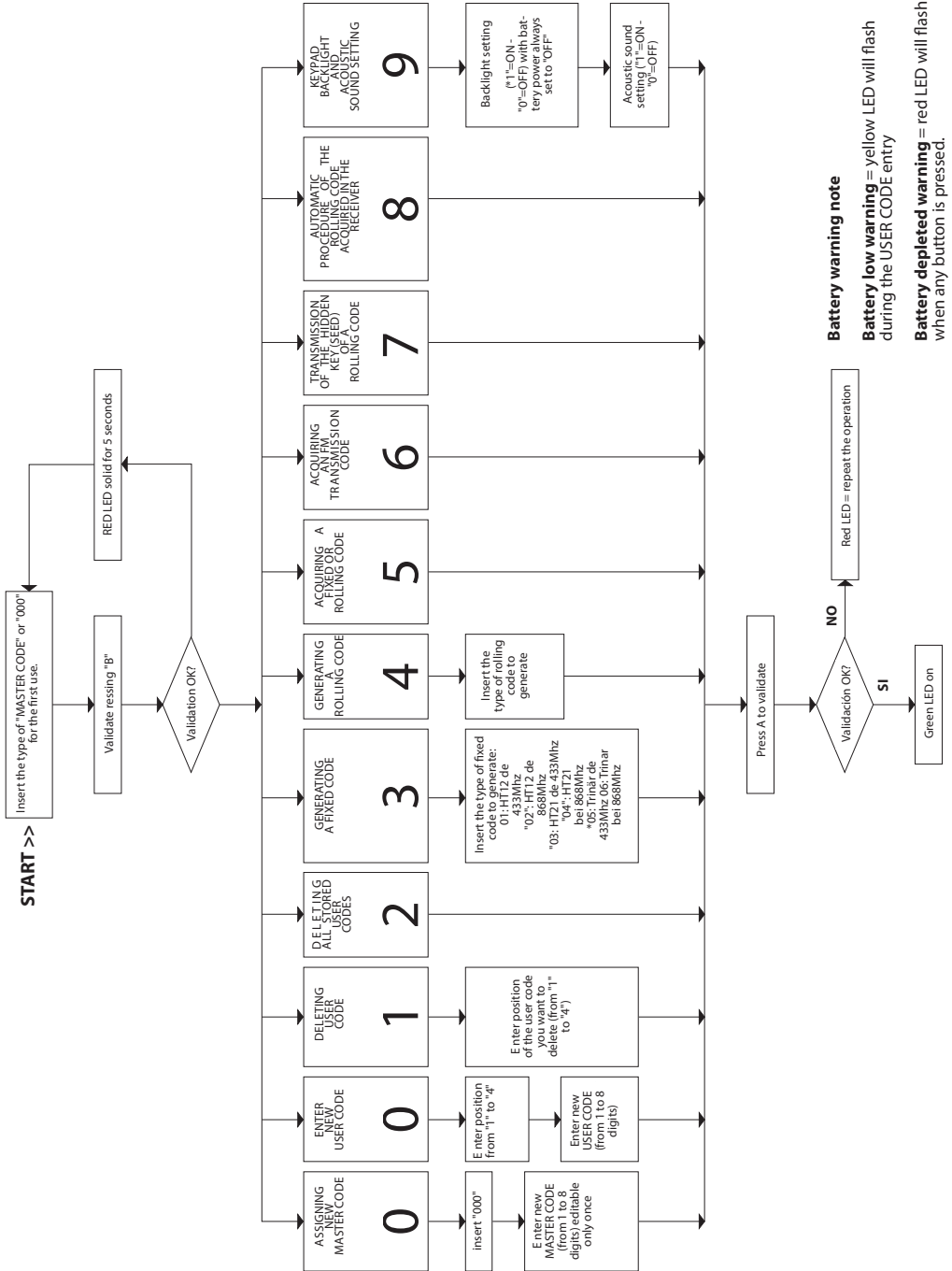


TABLE FOR IDENTIFYING REMOTE CONTROLS

Fixed Code List

Consult the list on our website,
on the product page "EGO-KODE"
www.abexo.tech/prodotto/ego-kode/



Rolling Code List

* = n° procedura da seguire

MARCA/BRAND	MODELLO	FOTO	*
ACM	TX2 COLOR		5
ADYX/GENIUS	TE4433H BLUE, BRAVO TE 4433H, ECHO TX4		5
ALLMATIC	BRO4WN, BRO4W RED, BROOVER, BROSTAR, MINI PASS, TECH3		5
APRIMATIC	TM4, TR2, TR4, TX2, TX4M		5
BENINCA	APPLE4WV, CUPIDO2, CUPIDO4, IO, T2, T4WV, TO-GO2, TO-GO 4WV		5
DEA	MIO TR2, MIO TR4, GENIE-R W		5
FAAC 433	XT4 433 RC		5
FADINI	JUBY SMALL, JUBY433		5
GENIUS/CASALI	252, 252 NEW, 254, 254 NEW		5
GiBiDi	AU1600, AU1610, AU1680, AU1810, DOMINO		5
MHOUSE	GTX4, MT4, TX3, TX4		5
MOOVO	MT4, MT4G, MT4V		5
NICE	SMILO		5
NORMSTAHL/ CRAWFORD	433-2K, 433-4K, EA433 2K, EA433 4K, EA433 2KM, T4334		5
PUJOL	VARIO BLACK, VARIO3 OCEAN, VARIO P2153		5
SEAV	BE GOOD RH1, BE HAPPY RH1, RH2, RH3, RS1, RS2, RS3		5
V2	PHOENIX, PHOX, TRC4, HANDY		5

MARCA/BRAND	MODELLO	FOTO	*
FAAC	DL2 868 SLH, DL4 868 SLH, T2, T4, TML2 SLH, TML4 SLH, XT2 SLH, XT4 SLH		5a
GENIUS	AMIGO JA 332, AMIGO JA 334, KILO TX2, KILO TX4		5a
MARCA/BRAND	MODELLO	FOTO	*
BFT	KLEIO TX2, KLEIO TX4, MITTO 2, MITTO 4, RB, RCB2, RCB4, TRC2, TRC4, TX2, TX4		5
MARCA/BRAND	MODELLO	FOTO	*
LIFTMASTER 433	94335E, 84335EML, 94335E-OLD		5
LIFTMASTER 315/390	371LM, 370LM, 372LM, 373LM, 374LM, 312HM/C, 412HM/C		5
SILVELOX	ECO-TSM2, 3400155		5
DOORHAN	T4		5
ERONE 433/868	SERIE 07, FLAT, MINI, STANDARD		5

ROLLING CODE FM

MARCA/BRAND	MODELLO	FOTO	*
CARDIN	5449QZ, 5437TX		6
SOMMER/ APERTO FM	4013, 4013TX, 4014, 4020, 4022TX, 4025, 4026		6
TELCOMA FM	FM402, FM402E, FM404E		6

NICE GROUP ROLLING CODE

MARCA/BRAND	MODELLO	FOTO	*
NICE	FLO2R, FLO4R, VERY VR, ERA-INTI2, ERA-ONE2/4		4a

DITEC GROUP ROLLING CODE

MARCA/BRAND	MODELLO	FOTO	*
DITEC	GOL4, BXLG4, BXP2, BXL52		4a

PRASTEL GROUP ROLLING CODE

MARCA/BRAND	MODELLO	FOTO	*
PRASTEL	TC4E, BF0R, MPSTL1E, MPSTL2E, MPSTL4E, MPSTP2E, MPSTP2		4a

ATTENTION - transmitters that follow procedure 5
If it is necessary to transmit the seed code (hidden button),
you must follow procedure 5a

TECHNICAL FEATURES EGO - EGO KODE

Power supply: 3V battery type CR 2032
Range in open space from 60 to 80m
EU zone frequencies 433.92MHz and 868.80MHz



Specifications are subject to change without notice.
AB Tecno S.r.l. assumes no responsibility for damage caused by improper use of the device.

GENERAL WARNINGS

- 1) **Rolling codes** are constantly evolving, and some transmitters may have been programmed with an encoder that changes its algorithm, so in some cases you may not be able to complete emulation.
- 2) For **proper emulation**, it is recommended to use the original working transmitter with charged batteries.
- 3) Make sure that there are **no sources of radio frequency interference** (ex cell phones).
- 4) To replace the battery, unscrew the Allen screw on the bottom of the radio keypad, open the plastic case and replace the battery. Close everything. Dispose of used battery at collection points.

SAFETY POLICY

Store the radio control out of the reach of children and animals, the product contains small removable parts. Do not store the radio control in environments with high humidity, vapors, dust, or exposed to sunlight, ultraviolet, gamma rays or X-rays.

WARRANTY

Warranty is in accordance with the provisions of the law. The contact person for any warranty services is the dealer. The warranty claim is applicable only for the country where the product was purchased. The battery is not included in the warranty.

DECLARATION OF CONFORMITY

The object of the declaration described above is in conformity with the relevant Union harmonisation legislation:
1999/5/EC on radio equipment and telecommunications terminal equipment and the mutual recognition of their conformity
1999/519/EC on the limitation of exposure of the general public to electromagnetic fields. References to the relevant harmonised standards used or references to the other technical specifications in relation to which conformity is declared: EN 300 220-2 Harmonized standard for ERM SRD in the 25 MHz to 1000 MHz range
EN 301 489-1 Electromagnetic Compatibility standard for radio equipment and services
EN 301 489-3 EMC Specific for Short-Range Devices (SRD)
EN 60950-1 Information technology equipment. Safety. General requirements
EN 62479 Assessment of the compliance of low power electronic and electrical equipment with the basic restrictions related to human exposure to electromagnetic fields (10 MHz to 300 GHz).

Bologna, li 15/11/2020

AB TECNO's CEO

A handwritten signature in black ink, appearing to read "Massimo Poggi".



Abexo is a brand owned by

AB Tecno Srl

Via Cicogna 95 - 40068 San Lazzaro di Savena (BO) - Tel: +39 051 6259580 / fax: +39 051 6259600
info@abtecono.com - www.abexo.tech