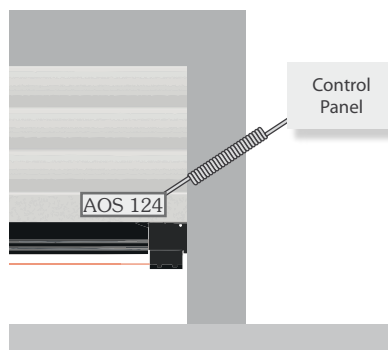


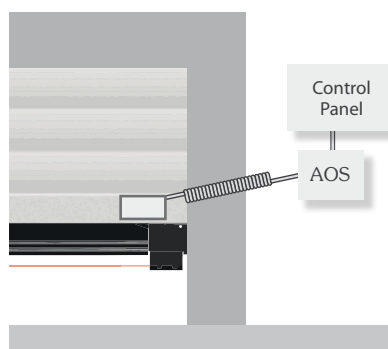
AOS124

NEW

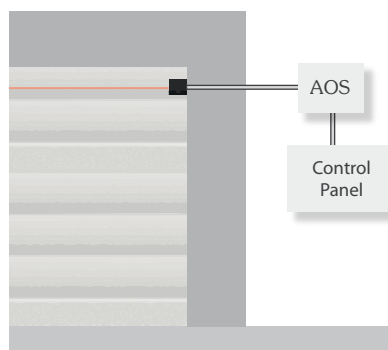
OSE signal converter
for LIG107



OSE safety device
Panel mounting



Safety device



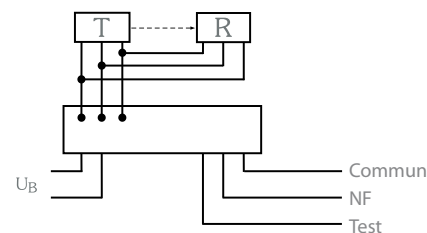
Protection against the risk of entrapment



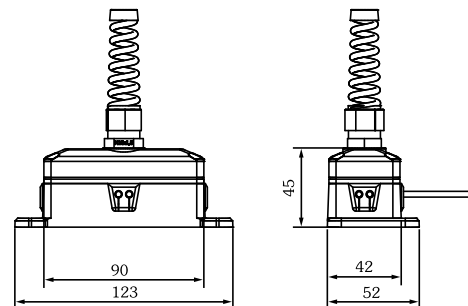
Advantages

- 1 input for 1 OSE device
- 1 relay output + test input
- NO or NC relay output
- LED indicators for input and output status
- Category 2 device, compliant with ISO13849-1 standard

The AOS124 signal converter allows a LIG1 light curtain with OSE output to be adapted to control panel that do not have this technology. The OSE signal is converted into a relay signal (potential-free).



LAD2: junction box in
impact-resistant ABS



Technical specifications

Power supply	19...35 VCC o 19...30 VCA
Input	1x OSE signal
Output	Relay/TEST inputs
Light Indicator	Yellow LED
Security	Cat. 2, ISO 13849-1
Protection degree	IP65

Package includes:
AOS124 card, LAD2 case, seals,
M16 protective spiral screw

APE-589/322865

AOS124
signal converter set
AOS124