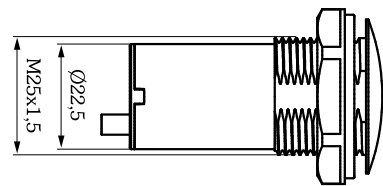


The **ARGOS** photocell is a barrier sensor designed for flush mounting directly into structural profiles, ensuring discreet and secure installation. Advanced technology ensures reliable detection, resistance to environmental conditions, and optimal integration into any type of structure.



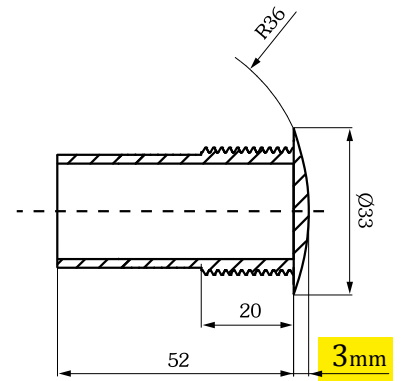
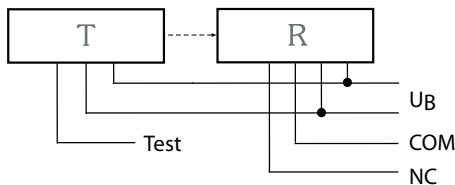
- Synchronised (2 pairs)
- Wear-free semiconductor relays
- Clogging indicator
- Insensitive to stray light
- **IP67, electronics fully encapsulated in resin**
- Pre-wired: cable length 4m



The wide opening angle ensures operation even in the event of angular deviations due to installation.

The M25 model complies with standardised cable gland dimensions.

The high level of protection of the enclosure structure is ensured by the installation of a sealing gasket.



## Technical specifications:

Operating voltage:

10÷40 Vdc / 10÷30 Vac

Door width: 1÷20 m (pre-set)

Output: semi-conductor output  
NC contact: potential-free / test input

LED indicators:

Transmitter: green LED

Receiver: red LED

Connection:

Transmitter: 3x0.25 mm<sup>2</sup>

Receiver: 5x0.25 mm<sup>2</sup>

Protection degree: IP67  
fully encapsulated

**APE-589/316408**



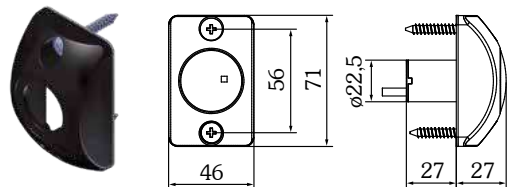
**SET ARGOS 2-channel (\*)**  
Compact synchronised  
photocells

(\*) The set includes:

- Transmitter with 4 m cable
- Receiver with 4 m cable

## Accessories

**APE-589/315919**



- Template for flush mounting of ARGOS photocells
- impact-resistant PA6 GF15 plastic

**APG-AR**